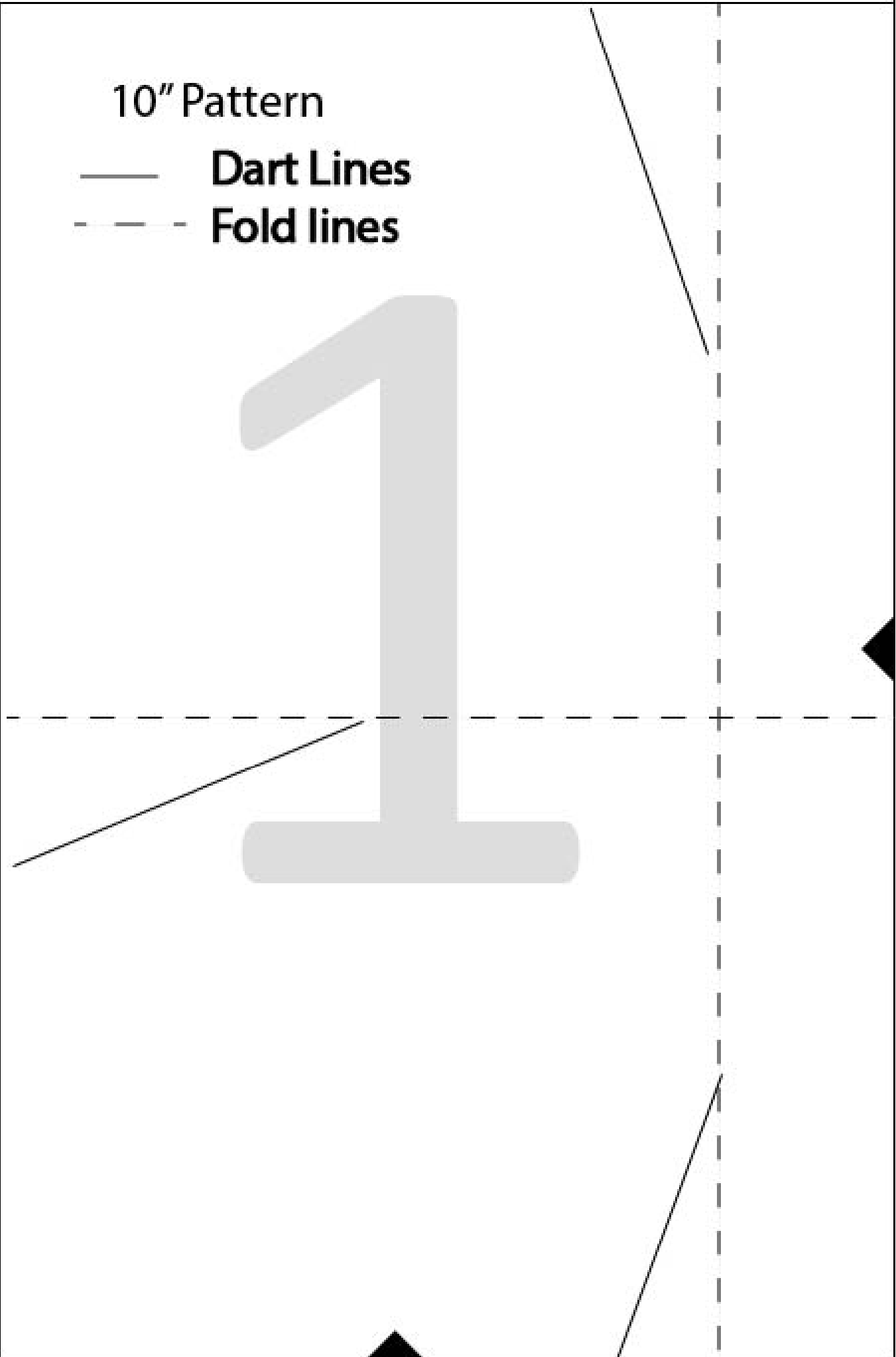


10" Pattern

- Dart Lines
- - - Fold lines

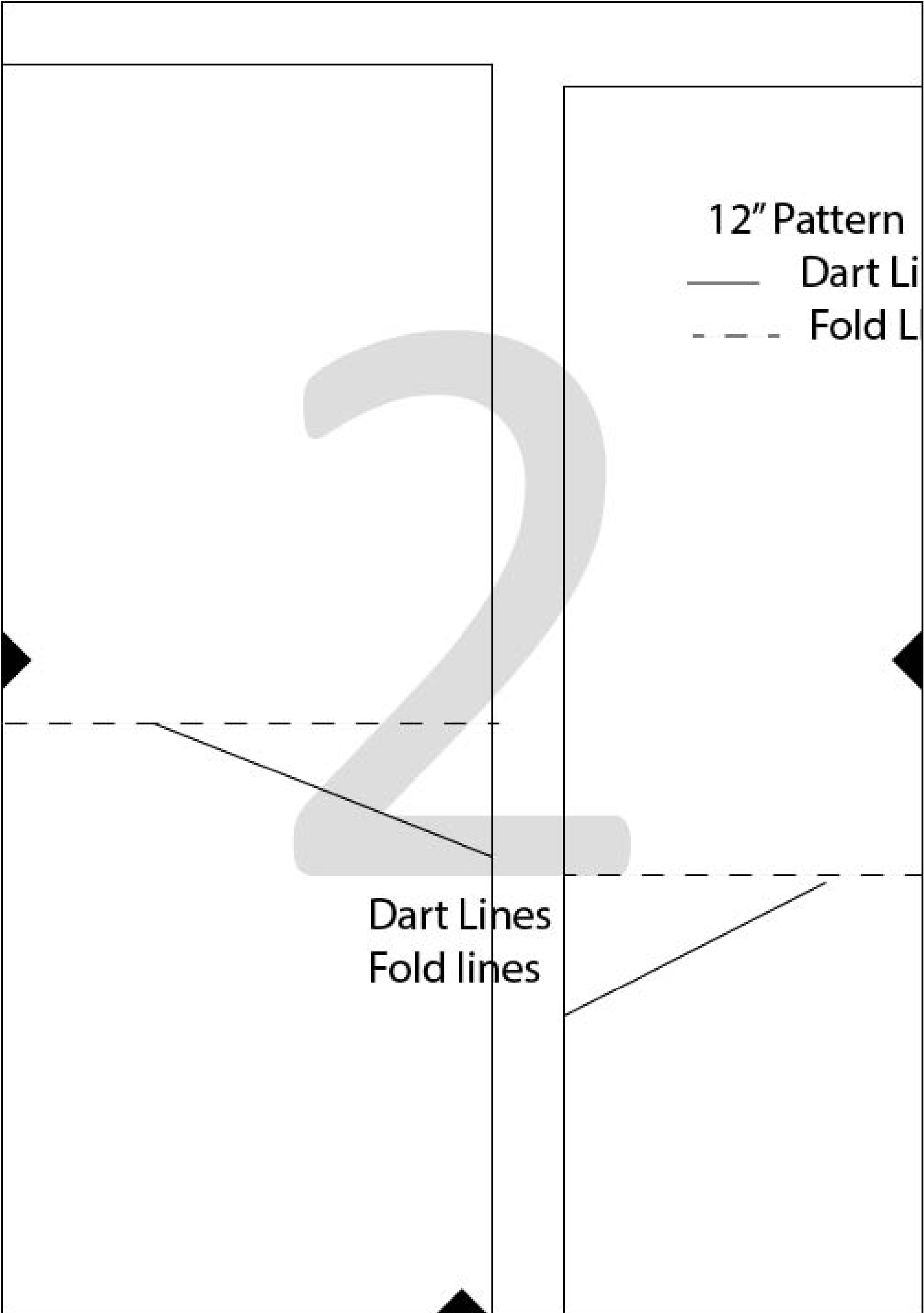


12" Pattern

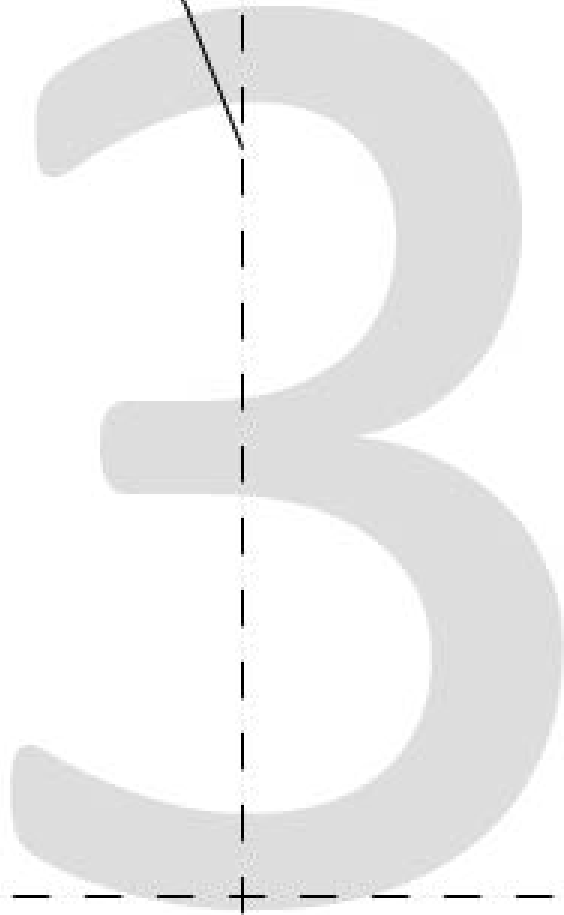
— Dart Li

- - - Fold L

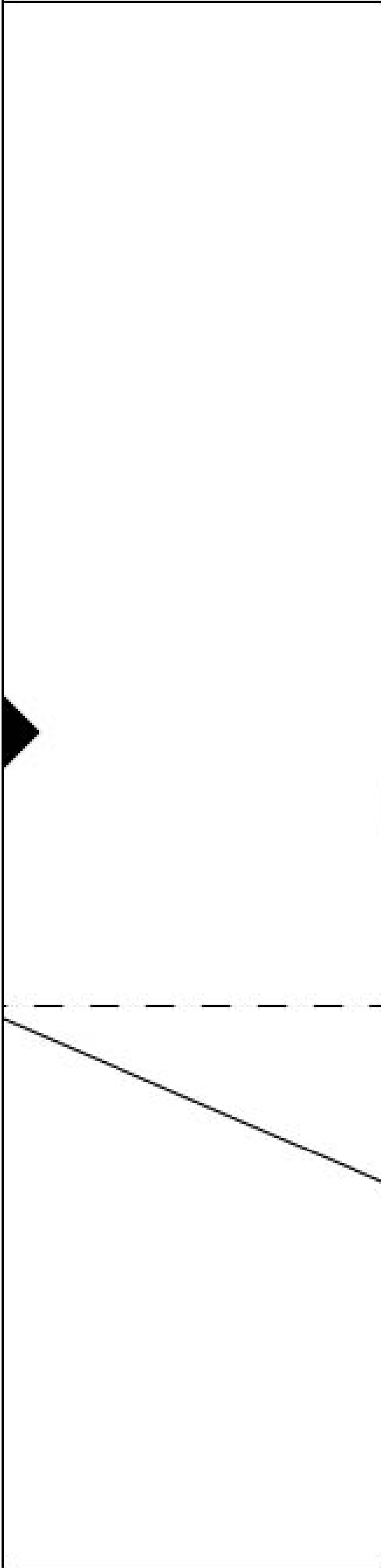
Dart Lines  
Fold lines



nes  
nes



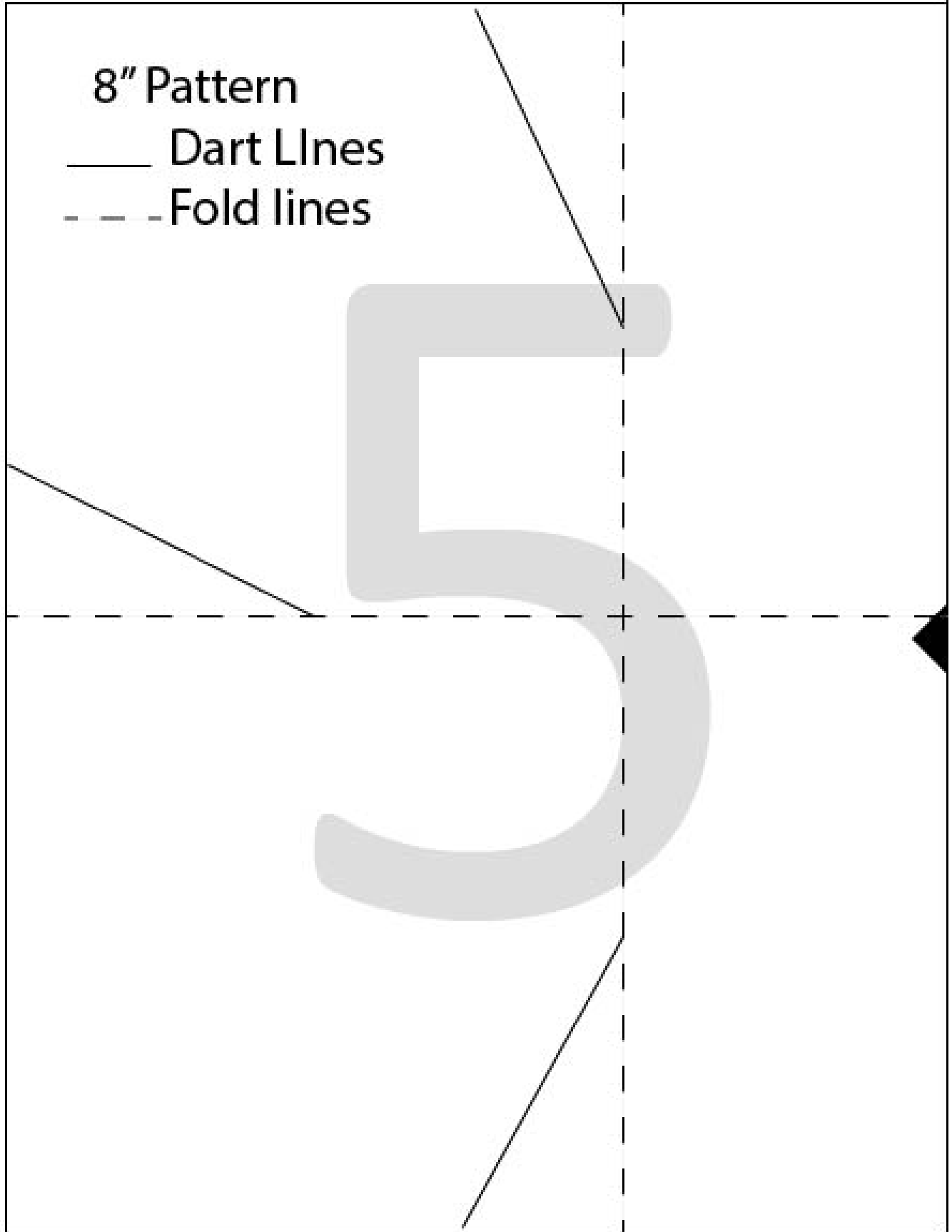
4



8" Pattern

— Dart Lines

- - - Fold lines



The diagram shows a rectangular frame with a central circular opening. A large, light gray watermark of the letter 'G' is centered over the opening. A rectangular box is superimposed on the right side of the circle, containing the text 'Hanging Hoop (optional)'. The frame has four black triangular markers at the corners: top-right, bottom-right, and bottom-center. On the left side, a dashed horizontal line extends from the center of the circle to the left edge, and a solid diagonal line extends from the top-left corner of the frame towards the center of the circle.

Hanging  
Hoop  
(optional)



8